

# TPS Series



The TPS Series is a pure sine wave power inverter. With advanced digital signal processing technology, the TPS Series has multiple functions such as power turbo mode, power saving mode, adjustable output voltage, fan speed control, etc. Besides, its outstanding protection included input DC polarity reversed protection, input DC over/under voltage protection, internal over temperature protection, overload protection and output short circuit protection. Furthermore, the TPS Series has RS232 communication port which allows you to monitor TPS Series status.

## Features



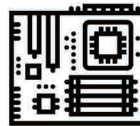
Polarity reversed protection  
- no components be damaged



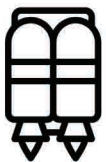
Output failure alarm  
- signal from dry contact



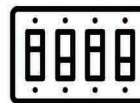
Power saving mode  
- power consumption < 1W



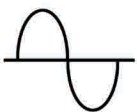
DSP control & high efficiency  
- efficiency up to 92%



Turbo mode  
- 120% continuous output power



Dip switch for setting  
- Output Vac & Hz adjustable



Pure sine wave output  
- same as the Grid waveform



Remote control available  
- remote on / off

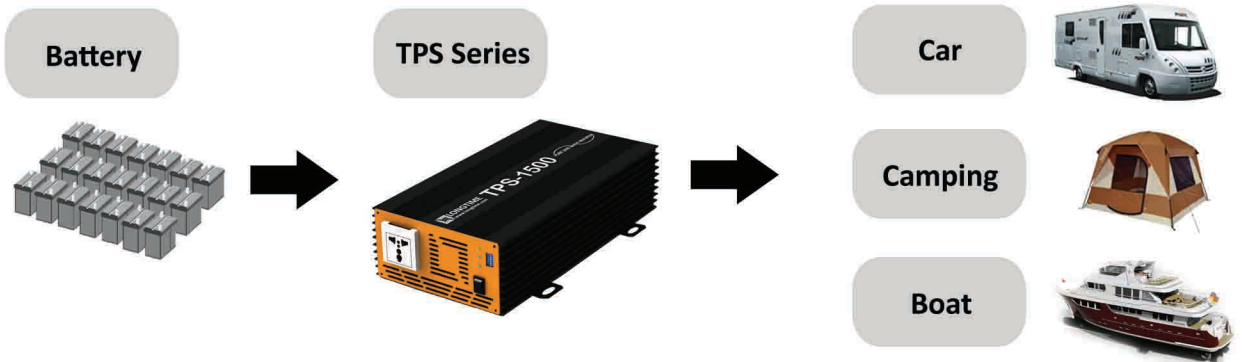


Intelligent fan speed control  
- depends on load / temperature



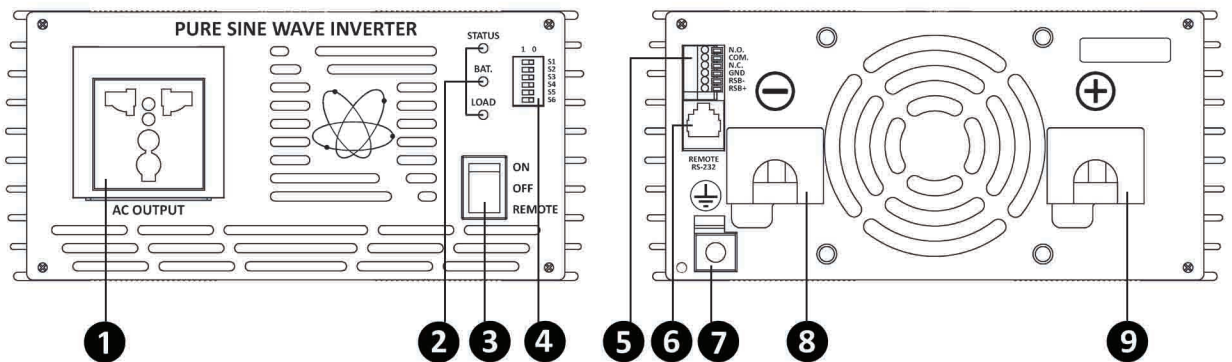
RS232 communication interface  
- easy to monitor

## Demonstration



\* Application to camping, truck, boat, emergency power, small tools

## Front & Rear Panel



- 1 Output receptacle
- 2 LED indicators
- 3 ON / OFF / REMOTE switch
- 4 Dip switch
- 5 Dry contact
- 6 RS232 interface
- 7 Ground
- 8 Battery - connection
- 9 Battery + connection

## Receptacle Option



NEMA Type



EU Type



UK Type



Australia Type

# Specification

Model	TPS70-12 TPS70-24	TPS100-12 TPS100-24	TPS150-12 TPS150-24	TPS200-12 TPS200-24	TPS300-12 TPS300-24
Capacity	700W	1000W	1500W	2000W	3000W
Output Power					
Continuous	700W	1000W	1500W	2000W	3000W
Surge	1400W	2000W	3000W	4000W	6000W
Turbo Mode	840W	1200W	1800W	2400W	3600W
Output Voltage	100VAC / 110VAC / 115VAC / 120VAC (Dip Switch Selectable) 200VAC / 220VAC / 230VAC / 240VAC (Dip Switch Selectable)				
Output Frequency	50Hz / 60Hz (Dip Switch Selectable)				
Wave Form	Pure Sine Wave				
THD	<2.5% <sup>a</sup>				
Input Voltage Range					
12VDC	10.5VDC ~ 16.5VDC				
24VDC	21.0VDC ~ 33.0VDC				
Max Efficiency					
12VDC	92%				
24VDC	93%				
No Load Power Consumption					
12VDC	< 1.2A	< 1.2A	< 1.2A	< 1.2A	< 1.2A
24VDC	< 0.6A	< 0.6A	< 0.6A	< 0.6A	< 0.6A
ECO Mode	< 1W	< 1W	< 1W	< 1W	< 1W
Low Battery Alarm					
12VDC	11.0VDC				
24VDC	22.0VDC				
High Battery Alarm					
12VDC	16.0VDC				
24VDC	32.0VDC				
Protection	DC Input Polarity Reversed / DC Under Voltage / DC Over Voltage / Output Short Circuit / Overload / Over Temperature				
Environment					
Operating Temperature	-20 ° C ~ 60 ° C				
Storage Temperature	-30 ° C ~ 70 ° C				
Humidity	95%, non-condensing				
Dimension (W * H * D / mm)	192*88.9*237.	192*88.9*280	192*88.9*335	192*88.9*407	192*88.9*480
Weight	2.6kgs	3.5kgs	4.5kgs	5.8kgs	6.5kgs
Remote Control (Option)	Yes				
GFCI (Option)	Yes				

\* Product specification is subject to change without prior notice

③ Normal condition : V<sub>ip</sub> = 12.5V / 25V    V<sub>op</sub> = 100V / 110V / 115V / 120V / 200V / 220V / 230V / 240V    Full load (PF=1.0)